



---

# PROPOSAL ENRICHMENT PROGRAM (INTERNSHIP TRACK)

---

# ENRICHMENT PROGRAM

ENRICHMENT PROGRAM (Internship Track) is the latest curriculum in BINUS UNIVERSITY. In this program, students are required to take a competence development program for 3-years study in college and one year of college in the industry with direct apprenticeship to build technical competence and soft skills.

This Program will allow student to do **full time** Internship (40 hour/week), Monday – Friday for **Min 4 month and Max 12 month**. During internship company has to provide supervisor.

We believe, this program is an excellent ways to prepare and develop students skills for any work settings, as well as networking with people in the future career area.



# BINUS UNIVERSITY UNDERGRADUATE PROGRAM

## SCHOOL OF INFORMATION SYSTEM



- *Information Systems*
- *Accounting Information Systems*
- *Information Systems Audit*
- *Information Systems & Accounting*
- *Information Systems & Management*
- *Business Information Technology*
- *Information Systems Accounting and Auditing*

## SCHOOL OF COMPUTER SCIENCE



- *Computer Science*
- *Cyber Security*
- *Games Application & Technology*
- *Mobile Application & Technology*
- *Computer Science & Mathematics*
- *Computer Science & Statistics*

## BINUS BUSINESS SCHOOL



- *Management*
- *Global Business Marketing*
- *Business Management*
- *International Business Management*

## SCHOOL OF DESIGN



- *New Media*
- *Animation*
- *Interior Design*
- *Creative Advertising*
- *Film*

## FACULTY OF ENGINEERING



- *Industrial Engineering*
- *Computer Engineering*
- *Civil Engineering*
- *Architecture*
- *Food Technology*

## SCHOOL OF ACCOUNTING



- *Accounting*
- *Accounting Technology*
- *Finance*

**KEMANGGISAN  
ALAM SUTERA, BEKASI**

# BINUS UNIVERSITY UNDERGRADUATE PROGRAM

## FACULTY OF HUMANITY



- *Psychology*
- *Chinese Literature*
- *English Literature*
- *Japanese Literature*
- *Business Law*
- *Primary Teacher Education*
- *International Relation*

## FACULTY OF DIGITAL COMMUNICATION AND HOTEL & TOURISM



- *Tourism*
- *Hotel Management*
- *Marketing Communication*
- *Mass Communication*
- *Hospitality Management*
- *Hospitality Management -  
Culinary Arts*

# BINUS ASO SCHOOL OF ENGINEERING UNDERGRADUATE PROGRAM

## SCHOOL OF ENGINEERING



- *Automotive and Robotics  
Engineering*
- *Product Design Engineering*

KEMANGGISAN  
ALAM SUTERA, BEKASI

# BINUS UNIVERSITY INTERNATIONAL UNDERGRADUATE PROGRAM

## SCHOOL OF COMPUTING & CREATIVE ARTS



- *Fashion Design*
- *Fashion Management*
- *Computer Science*
- *Business Information Systems*
- *Communication (International)*

## BINUS BUSINESS SCHOOL INTERNATIONAL UNDERGRADUATE



- *International Business*
- *Business Management & Marketing*

## SCHOOL OF ACCOUNTING



- *International Accounting & Finance*

**JOSEPH WIBOWO CENTER  
(SENAYAN)**

# BINUS UNIVERSITY @ BANDUNG UNDERGRADUATE PROGRAM

WELCOME TO  
**BINUS**  
SEKOLAH TINGGI  
TEKNOLOGI KREATIF  
BANDUNG

## **BINUS BUSINESS SCHOOL**



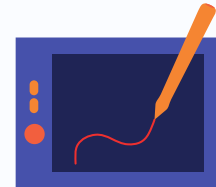
- *Creativepreneurship*

## **SCHOOL OF COMPUTER SCIENCE**



- *Computer Science*

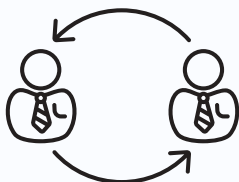
## **SCHOOL OF DESIGN**



- *Visual Communication Design*
- *Interior Design*

# BINUS UNIVERSITY @ MALANG UNDERGRADUATE PROGRAM

## **FACULTY OF ECONOMICS & COMMUNICATION**



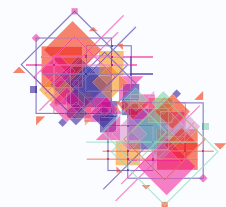
- *Public Relations*
- *Communication*

## **SCHOOL OF COMPUTER SCIENCE**



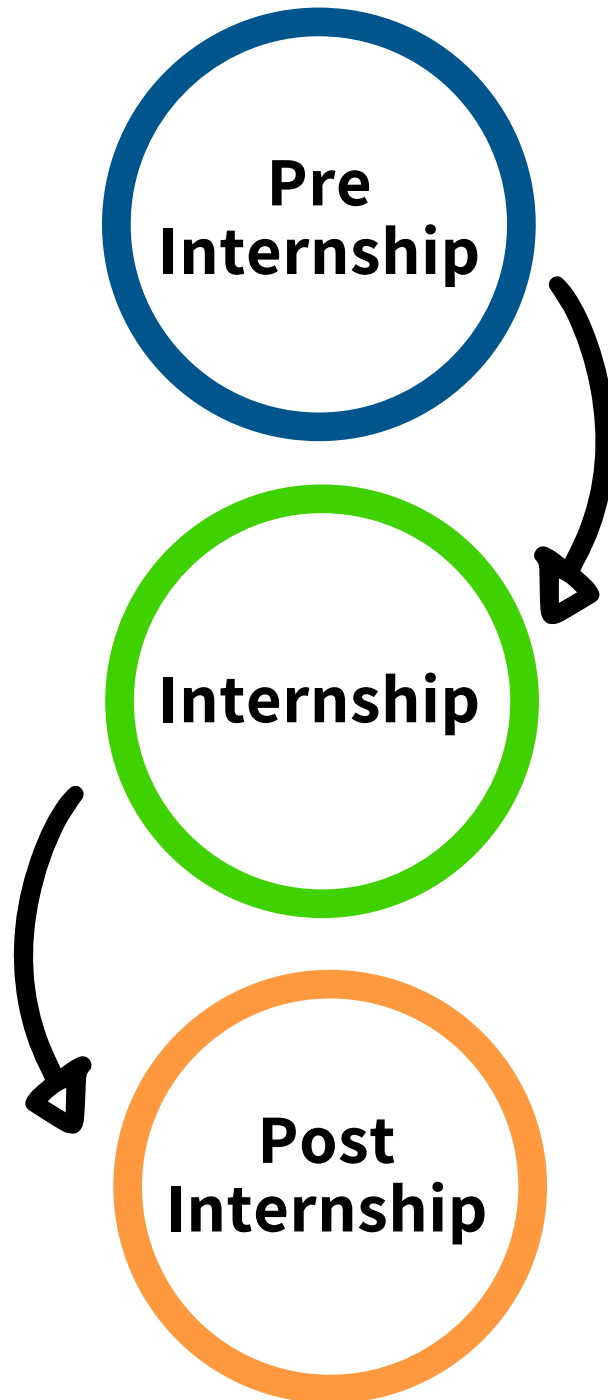
- *Computer Science*

## **SCHOOL OF DESIGN**



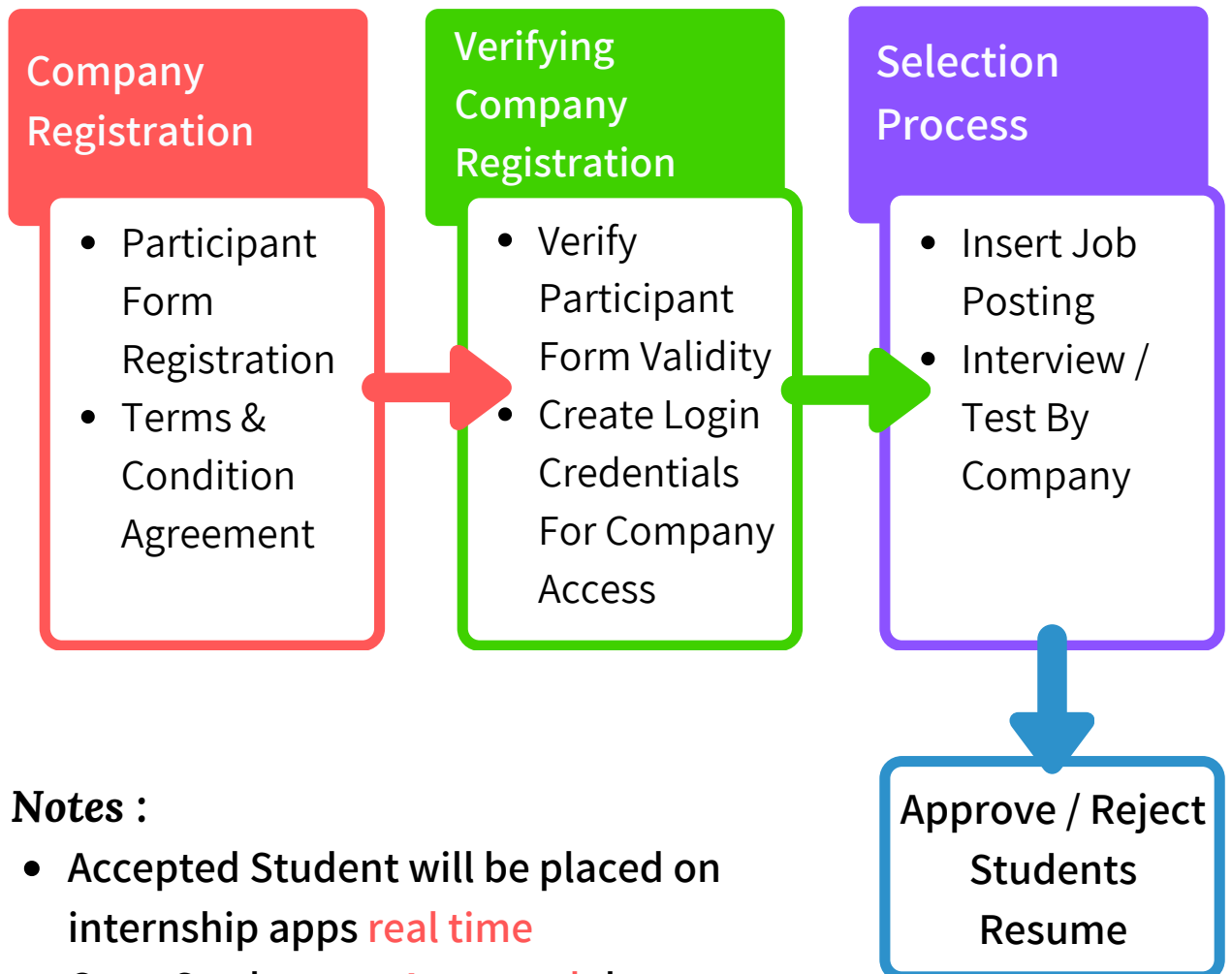
- *Visual Communication Design*
- *Interior Design*

# INTERNSHIP TRACK PROGRESS



# INTERNSHIP TRACK PROGRESS

## Pre Internship



### Notes :

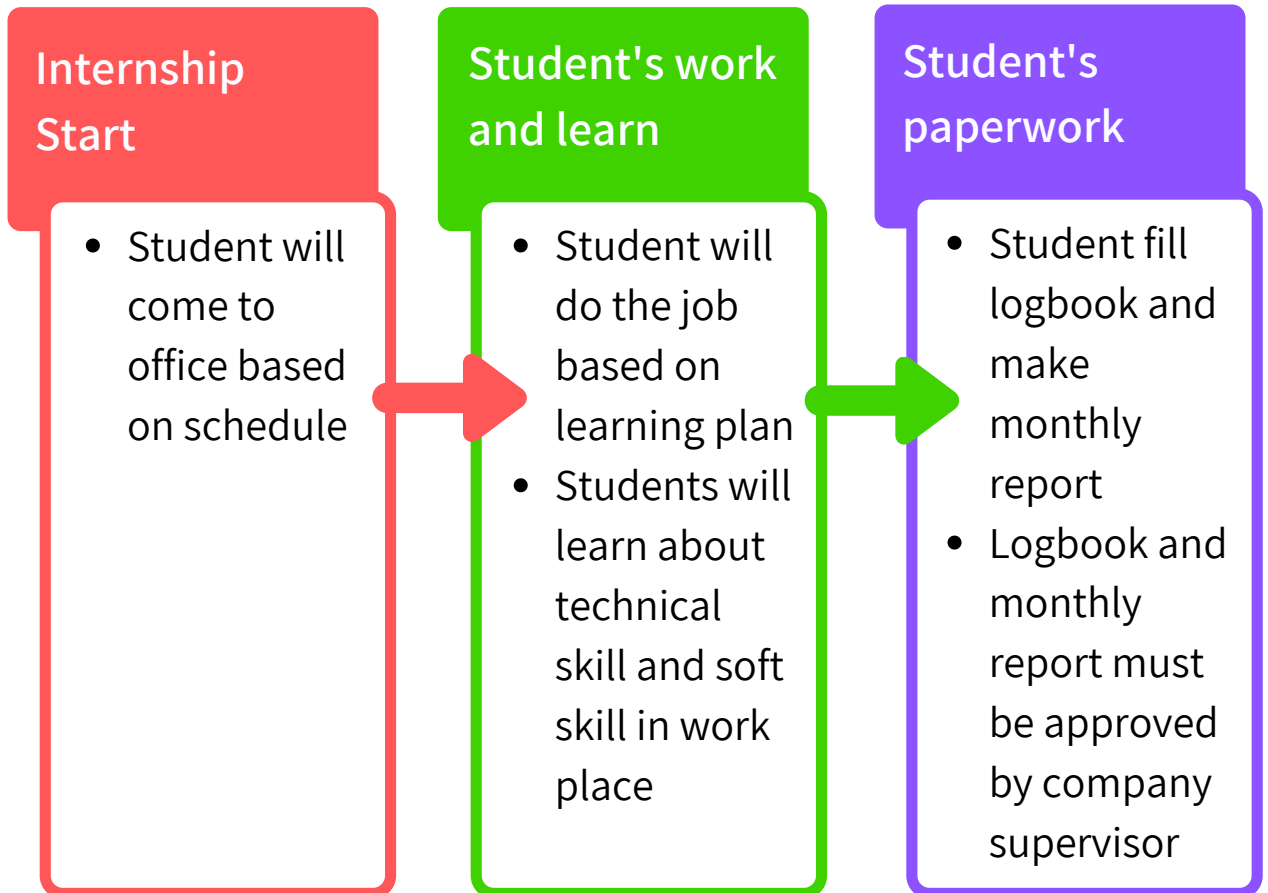
- Accepted Student will be placed on internship apps **real time**
- Once Student get **Approved** they cannot apply to another company
- Website Link for Internship Apps : **[internship.apps.binus.ac.id](http://internship.apps.binus.ac.id)**





# INTERNSHIP TRACK PROGRESS

## Internship



### Notes :

- Once in a every month Student have to meet their faculty supervisor for consultation (after office hour or in Saturday)
- Learning Plan will be discussed with faculty supervisor or internship coordinator before internship start
- Student **are not allowed** to have permission for campus activity during working days



# INTERNSHIP TRACK PROGRESS

Post  
Internship

## Report Submission

- Student finishing their internship report
- Student submit internship report to University

## Evaluation and Assessment

- Company have a choice to conduct presentation or not before assessment
- Company fill out the assessment sheet

### Notes :

- Final Internship Report have to signed by Company and Faculty Supervisor
- Presentation is optional



# INTERNSHIP ASSESSMENT

Internship process that is part of the enrichment program is the first step for students to learn while at the same time getting to know the working world more clearly. The purpose of this internship is to foster and educate students by providing real working experience (real world), so that students become human resources who are ready to apply in the industry. Strategic collaboration between BINUS University and industrial partners is intended to reduce the gap between education and the industrial world.

Students will learn firsthand starting from following the work culture and working professionally in accordance with applicable rules and regulations. The most important thing is students have the opportunity to be able to directly apply the knowledge learned on campus in a real working environment (real world).



# INTERNSHIP ASSESSMENT

Internship process can be carried out for 2 (two) semesters where industry partners will provide job positions that are tailored to the study program / program of each student with a total weight of 40 credits.

Internship

1 Semester  
Equals  
16-20 Credits



## Scoring



The scoring for student internship will be done by site supervisor and faculty supervisor with 50% weight each.

Site  
Supervisor



50 %

Faculty  
Supervisor



50 %



# INTERNSHIP TRACK SCHEDULE

Internship Time	Students Socialization	CV Collection and Selection Process
FEB	End of Sept - Mid of Oct	Mid of Oct - End of January
SEP	End of Feb - Mid of March	Mid of March - End of August

## Notes :

- Company will receive student CV based on students application
- Company can contact directly to student for scheduling the interview or test by system.
- Student will do Internship for Min 4 month - Max 12 months (Except :
  1. Computer Science (minimal mandatory 12 months in one company)
  2. For Master Track & Global program maximum internship duration is only 6 months
  3. For School of Design (maximum internship duration for one semester is 5 months, two semesters are 10 months)



# INTERNSHIP TRACK SCHEDULE



Major	Available Feb	Available Sept
Business Management	✓	✓
International Business Management	✓	✓
Global Business Marketing	✓	✓
Global Business Marketing (Global)	✓	✓
Management	✓	✓
Management (Global)	✓	✓
Management (MT)	✓	
Creativepreneurship	✓	✓
Accounting	✓	✓
Accounting (Global)	✓	✓
Accounting Technology	✓	✓
Finance	✓	✓
Hotel Management	✓	✓
Marketing Communication	✓	✓
Mass Communication	✓	✓
Tourism	✓	✓
International Accounting & Finance	✓	✓
Hospitality Management	✓	✓
Hospitality Management - Culinary Art	✓	✓
Architecture	✓	✓
Civil Engineering	✓	✓
Computer Engineering	✓	✓
Food Technology	✓	✓
Industrial Engineering	✓	✓
Business Law	✓	✓
Chinese Literature	✓	✓
English Literature		✓
International Relations	✓	✓
International Relations (Global)	✓	✓
Japanese Literature	✓	✓
Primary Teacher Education	✓	✓
Psychology	✓	✓

# INTERNSHIP TRACK SCHEDULE



Major	Available Feb	Available Sept
Computer Science	✓	✓
Computer Science & Mathematics		✓
Computer Science & Statistics		✓
Cyber Security	✓	✓
Game Application and Technology	✓	✓
Mobile Application and Technology	✓	✓
Computer Science (MT)	✓	
Computer Science (Global)	✓	✓
Animation	✓	✓
Creative Advertising	✓	✓
Interior Design	✓	✓
New Media	✓	✓
Film	✓	✓
Visual Communication Design	✓	✓
Accounting Information Systems	✓	✓
Business Information Technology	✓	✓
Information Systems	✓	✓
Information Systems & Management		✓
Information Systems Audit	✓	✓
Information Systems (MT)	✓	
Information Systems (Global)	✓	✓
Accounting & Information Systems		✓
International Business	✓	✓
Business Management & Marketing	✓	✓
Business Information Systems	✓	✓
Communications	✓	✓
Public Relations	✓	✓
Fashion Management	✓	
Fashion Design	✓	

**Note :**

- MT = Master Track
- Global = Global Class
- If Checklisted Only September or February, Maximum Duration Of Internship is 6 Months

# INTERNSHIP DURATION



Major	Intern Months Duration					
	4	5	6	10	11	12
Business Management	✓	✓	✓	✓	✓	✓
International Business Management	✓	✓	✓	✓	✓	✓
Global Business Marketing	✓	✓	✓	✓	✓	✓
Global Business Marketing (Global)	✓	✓	✓			
Management	✓	✓	✓	✓	✓	✓
Management (Global)	✓	✓	✓			
Management (MT)	✓	✓	✓			
Creativepreneurship	✓	✓	✓			
Accounting	✓	✓	✓	✓	✓	✓
Accounting (Global)	✓	✓	✓			
Accounting Technology	✓	✓	✓	✓	✓	✓
Finance	✓	✓	✓	✓	✓	✓
Hotel Management	✓	✓	✓	✓	✓	✓
Marketing Communication	✓	✓	✓	✓	✓	✓
Mass Communication	✓	✓	✓	✓	✓	✓
Tourism	✓	✓	✓	✓	✓	✓
International Accounting & Finance	✓	✓	✓	✓	✓	✓
Hospitality Management	✓	✓	✓	✓	✓	✓
Hospitality Management - Culinary Art	✓	✓	✓	✓	✓	✓
Architecture	✓	✓	✓	✓	✓	✓
Civil Engineering	✓	✓	✓	✓	✓	✓
Computer Engineering	✓	✓	✓	✓	✓	✓
Food Technology	✓	✓	✓	✓	✓	✓
Industrial Engineering	✓	✓	✓	✓	✓	✓
Business Law	✓	✓	✓	✓	✓	✓
Chinese Literature	✓	✓	✓	✓	✓	✓
English Literature	✓	✓	✓			
International Relations	✓	✓	✓	✓	✓	✓
International Relations (Global)	✓	✓	✓			
Japanese Literature	✓	✓	✓	✓	✓	✓
Primary Teacher Education	✓	✓	✓	✓	✓	✓
Psychology	✓	✓	✓	✓	✓	✓



# INTERNSHIP DURATION



Major	Intern Months Duration					
	4	5	6	10	11	12
Computer Science						✓
Computer Science & Mathematics			✓			
Computer Science & Statistics			✓			
Cyber Security						✓
Game Application and Technology						✓
Mobile Application and Technology						✓
Computer Science (MT)			✓			
Computer Science (Global)			✓			
Animation	✓	✓		✓		
Creative Advertising	✓	✓		✓		
Interior Design	✓	✓		✓		
New Media	✓	✓		✓		
Film	✓	✓		✓		
Visual Communication Design	✓	✓		✓		
Accounting Information Systems	✓	✓	✓	✓	✓	✓
Business Information Technology	✓	✓	✓	✓	✓	✓
Information Systems	✓	✓	✓	✓	✓	✓
Information Systems & Management	✓	✓	✓			
Information Systems Audit	✓	✓	✓	✓	✓	✓
Information Systems (MT)	✓	✓	✓			
Information Systems (Global)	✓	✓	✓			
Accounting & Information Systems	✓	✓	✓			
International Business	✓	✓	✓	✓	✓	✓
Business Management & Marketing	✓	✓	✓	✓	✓	✓
Business Information Systems	✓	✓	✓	✓	✓	✓
Information Systems Accounting and Auditing	✓	✓	✓	✓	✓	✓
Communications	✓	✓	✓	✓	✓	✓
Public Relations	✓	✓	✓	✓	✓	✓
Fashion Management	✓	✓	✓	✓	✓	✓
Fashion Design	✓	✓	✓	✓	✓	✓
Automotive and Robotics Engineering	✓	✓	✓	✓	✓	✓
Product Design Engineering	✓	✓	✓	✓	✓	✓

**Note :**

- Checked = Available
- Blank = Not Available

# How To Participate?

 **CONTACT US!**



**BINUS Internship Center**  
**Ms. Laily Alfa Citra (Laily)**

Email : laily\_ac@binus.edu  
Phone : 021-5345-830 ext 1135  
Mobile : 0878-8018-0178

**BINUS Internship Center**  
**Mr. Jeffrey Arief Mulyono (Jeffrey)**

Email : jmulyono@binus.edu/  
internship@binus.edu  
Phone : 021-5345-830 ext 1135  
Mobile : 0899-8289-446

**BINUS Internship Center**  
**Ms. Marsellia Erlangga (Marsel)**

Email : marsellia.erlangga@binus.edu/  
internship@binus.edu  
Phone : 021-5345-830 ext 1135  
Mobile : 0856-1852-834

**BINUS Internship Center**  
**Mr. Nelson (Nelson)**

Email : nelson@binus.edu/  
internship@binus.edu  
Phone : 021-5345-830 ext 1135  
Mobile : 0896-2899-9587

**BINUS Internship Center**  
**Ms. Christine Rusli (Christine)**

Email : christine.rusli@binus.edu/  
internship@binus.edu  
Phone : 021-5345-830 ext 1135  
Mobile : 0813-3189-0603

**E&E Kampus Alam Sutera**  
**Ms. Yeni Mukti (Yeni)**

Email : ymukti@binus.edu/  
geecalsut@binus.edu  
Phone : 021-2977-9100 ext 7200  
Mobile : 0878-8331-4025

**E&E Kampus Alam Sutera**  
**Ms. Putu Eka Ayuningtyas (Ayu)**

Email : payuningtyas@binus.edu/  
geecalsut@binus.edu  
Phone : 021-2977-9100 ext 7200/7307  
Mobile : 0813-1471-1918

# How To Participate?

 **CONTACT US!**



**E&E Kampus Senayan (JWC)**  
**Ms. Della Hernita Putri (Della)**

Email : dhputri@binus.edu/  
geesenayan@binus.edu  
Phone : 021-720-2222 ext 3208  
Mobile : 0818-822-007

**E&E Kampus Bekasi**  
**Ms. Rohimah (Ima)**

Email : rohimah@binus.edu/  
geebekasi@binus.edu  
Phone : 021-2928-5598 ext 7945  
Mobile : 0857-7526-2747

**GEA Kampus Bandung**  
**Mr. Panji Widya Nugraha (Panji)**

Email : panji.nugraha@binus.edu  
Mobile : 0821-3081-3316

**GEA Kampus Bandung**  
**Ms. Indah Dwi Putri (Indah)**

Email : geabinusbandung@binus.edu  
Mobile : 0895-0145-8164

**GEA Kampus Malang**  
**Ms. Meida Adelina**

Email : meida.adelina@binus.edu  
Mobile : 0859-3318-2748

**GEA Kampus Malang**  
**Mr. Agam Syah Putra**

Email : asputra@binus.edu  
Mobile : 0821-1234-3245